

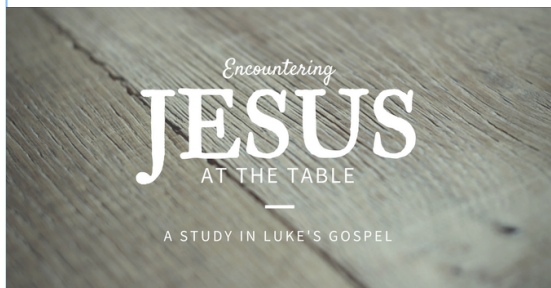
Mar 12
BULLETIN

WELCOME TO LAMBRICK PARK CHURCH



p. 250.477.9721 | f. 250.477.9746 | e. office@lambrick.com | w. lambrick.com

GORDON HEAD + VICTORIA + THE WORLD



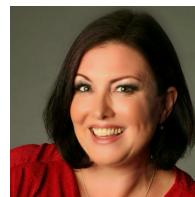
This morning we find ourselves at another meal with Jesus in the gospel of Luke – **Luke 9:12-17. Encounter Jesus at the Table** and see the gospel revealed – God is restoring us to savour and enjoy the gifts of creation together with God for eternity. Be inspired by Jesus to open your table and life to others... Pull up a chair and come hungry! You are invited to Jesus' Table.

Ladies Spring High Tea

Saturday April 8 from 1-3pm. Ladies take this opportunity to invite your friends and neighbours. The theme of the afternoon will be **ALL THINGS NEW – God's Promise of New Life**, with words by Jenn Taylor and images by Janet Anderson. \$15/person – tickets available soon. Please email the church office or sign up at the info table if you would like to host a table.

CAMP NIGHT

March 17, 7-9:30pm here at Lambrick, Grades 6-12. Bring your friends for an evening of games, food and music. Re-connect with cabin leaders, staff and old friends from past summers. A great night to experience if you are new to **camp Imadene** and want to learn more about it. Staff will also be available to answer questions.



THE TEAM LEAVES TOMORROW!

March 13th-23rd, Geoff and Rosemary Gaunt (Lambrick), Brian Alton (Lambrick) and Heidi Woods (now Hollydene) will travel once again to Sasiga, Ethiopia. After more than a decade of our support, the Lowlands community of 25,000 people is thriving, and has reached 'graduation' - the point when *Food for the Hungry* has helped them into a sustainable future. Our representatives will be there to celebrate this incredible achievement, continue to build relationships, and explore the new work in the Highlands region to which we have committed another decade of support. Please pray for safety, against sickness, and for a great trip.

As they go, we encourage YOU to write notes and prayers for the people they meet - especially the FH team there and church leaders. Our team can take any paper that fits in an envelope. **Please drop off today at the info desk.**



KIDS MINISTRY

Upon arriving, please check your kids in at our check-in station by the main doors. Children stay with their parents in the service until their programs begin.

Kidcare	(ages 0-2 yrs)	Room 115
Jr. Kids	(ages 3-4 yrs)	Room 112
Kids	(K-Gr. 5)	Room 102
APEX	(Gr 6-8)	Youth Room

If you'd prefer to keep your little one with you and need a quiet place there is a daycare room in the office lounge.

PRAYER MATTERS

Today we pray for **Maria Montessori Academy**. Also, we will pray for our missions partners **Food for the Hungry** and the project we have been supporting for the last 12 years in Sasiga, Ethiopia. We are so thankful for the work that has been done with the community and the success achieved in helping them move into a sustainable future. We pray for Geoff and Rosemary Gaunt, Brian Alton and Heidi Woods who will be travelling to Ethiopia tomorrow to join the celebration of the Sasiga lowlands "Graduation". We ask for good health for them as they travel and that they will be a blessing to each other, to the *Food for the Hungry* workers in Ethiopia, and the other members of the Canadian team who are making the trip.

CARLIE KILDUFF

Join Carlie **TODAY** as she shares her journey to Christ through her spoken word poetry. This will be a living testimony of God's weave and pull in Carlie's life. Music, storytelling and inspiring discussion will accompany her original poetry. **2-4pm in the Café**. Admission by donation.

ALPHA

Ross and Denise Harris, John Catterall and Bernadette Doyle will be leading an **ALPHA course** beginning tomorrow. The course is now full! Please pray for the leaders and attendees as they journey together in the coming months.

YOUNG & ADULT

A new **small group** is starting up for young adults, meeting Monday nights at 6:30pm. Talk with Jen (jennifer.williams9651@gmail.com) or Erica (ericapepevnak@gmail.com) for more information.

Young Adult Lunch will be happening **next Sunday** after church in the Café.

WAYS TO CONNECT

Alpha : begins MON Mar 13

ELL: MON 10:30-12noon, Beginner level
MON 7 – 8:30pm, Intermediate level
THURS 10:30 -12noon, Beginner & Intermediate level

Women's Faith Connection:

TUES 9:30 -11:30.

Prayerwerks: WED 7- 8am

Connect (High School Youth): WED 7- 9pm

Women in the Word: WED 7- 9pm.

Men's Bible Study: cancelled this week

Club 412 (Grades 6-8): THURS 6:30 - 8:30

**VOLUNTEERS
NEEDED**

Look for more information at
www.lambrick.com/get-connected

OFFICE HOURS: MON-THURS 10-3PM

Worship:	simonp@lambrick.com
Youth:	glen@lambrick.com
Kids:	jenn@lambrick.com
Elders:	board@lambrick.com
Lead Pastor:	scott@lambrick.com
Prayer requests:	prayer@lambrick.com

we seek to **KNOW, LOVE & SERVE GOD**
with **GRACE, AUTHENTICITY & HOSPITALITY**
In our **CHURCH, NEIGHBOURHOOD & WORLD**

